

# Dates 2023

June 17

July 15

Aug. 19

Sept. 16

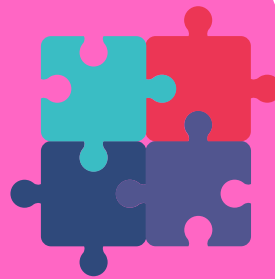
Oct. 21

Nov. 18

Dec. 16



## JIGSAW PUZZLE COMPETITION



To register, call Gladwin  
County District Library

**989-426-8221**

### How it Works

- Assemble a team of 2-4 people (Ages 13 and up)
- Create a team name.
- Team captain registers the team, and they will be the main contact. Space limited to 7 teams, so register early!
- Prize for the winning team!
- For more details & rules call the library!

